

# Wire to Board, Header

## SWB2540VD-XX

### Description

The SWB2540VD-XX is a Dip style connector with a 2.54 mm pitch. And is available up to 15 poles.



### Features

#### Mechanical Properties

	Description
Connector Type	DIP, single row
Orientation	Vertical
Poles	2-15 Poles
Pitch	2.54 mm
Insulator body material	PA66, UL94V-0
Contact material	Brass, Tin plated over Nickel
Operating Temperature Range	-40°C~+105°C
Dimensions	See table

#### Electrical Properties

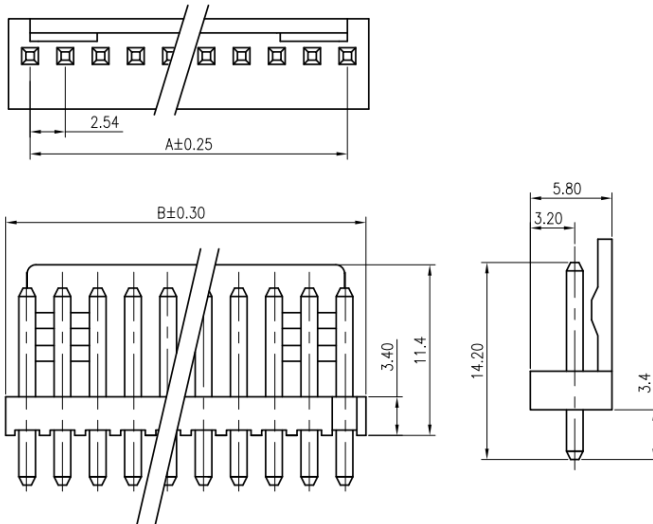
	Description
Current Rating	4A AC/DC
Voltage Rating	250V AC/DC
Contact Resistance	10mΩ max.
Insulation Resistance	1000MΩ min.
Dielectric Withstanding	1000V AC / 1 min

# Wire to Board, Header

## SWB2540VD-XX

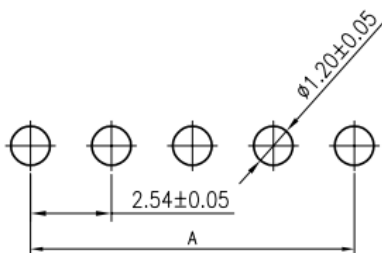
### Dimensions

\*unit: mm, N= number of poles



### PCB Footprint

\*unit: mm , N = number of poles



Number of Poles:	Dimensions	
	A	B
02	2,54	5,08
03	5,08	7,62
04	7,62	10,16
05	10,16	12,70
06	12,70	15,24
07	15,24	17,78
08	17,78	20,32
09	20,32	22,86
10	22,86	25,40
11	25,40	27,94
12	27,94	30,48
13	30,48	33,02
14	33,02	35,56
15	35,56	38,10

# Wire to Board, Header

SWB2540VD-XX



### Part number

**SWB1254VT-XX**

<b>SWB1254VT</b>	Style of connector
<b>XX</b>	Poles
	2,3,4,5,6,7,8, 9,10, 11,12,13,14,15

### Ordering information

Ordering can be done via [www.summit-electronics.com](http://www.summit-electronics.com) or via [info@summit-electronics.com](mailto:info@summit-electronics.com). Please contact us for more information. Customisation of the product is available on request.

### Technical support

For all product questions please contact us via [info@summit-electronics.com](mailto:info@summit-electronics.com)

### Document revision

Rev	Date	changes
<b>V01.00</b>	27-06-2023	First issue of document, EK